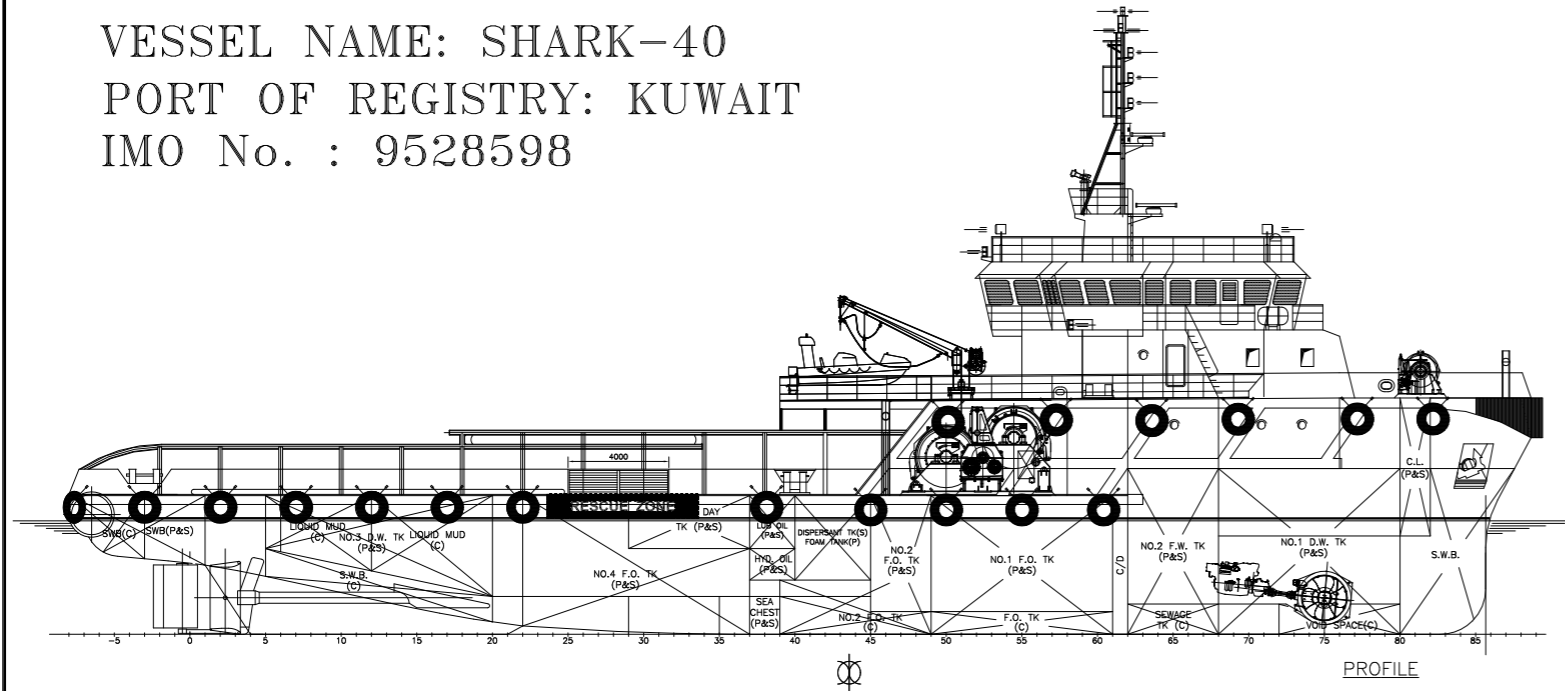
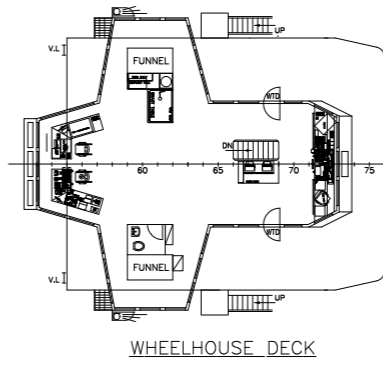


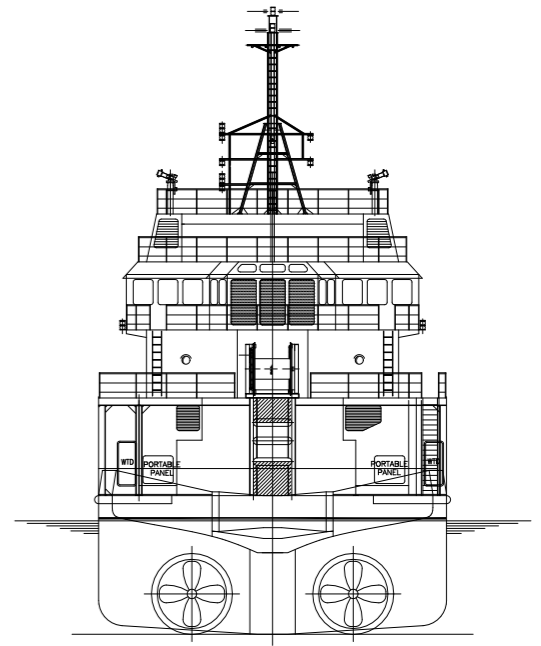
GENERAL ARRANGEMENT OF 4958
 VESSEL NAME: SHARK-40
 PORT OF REGISTRY: KUWAIT
 IMO No. : 9528598



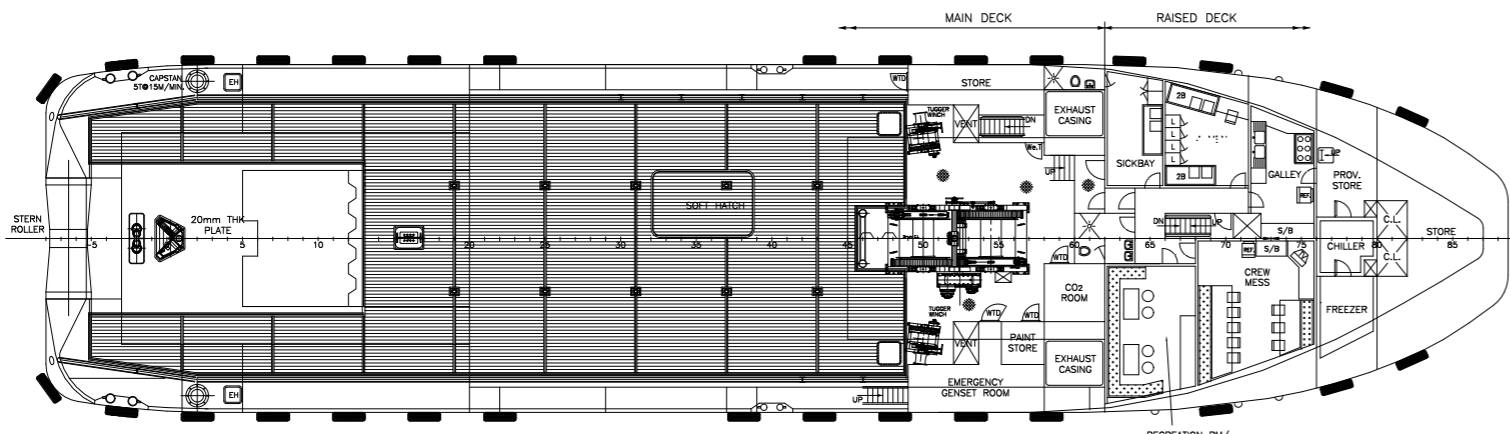
PROFILE



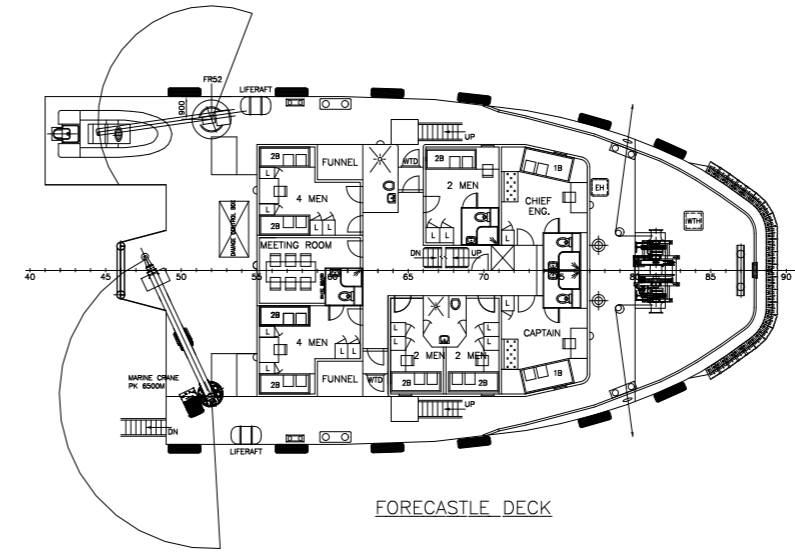
WHEELHOUSE DECK



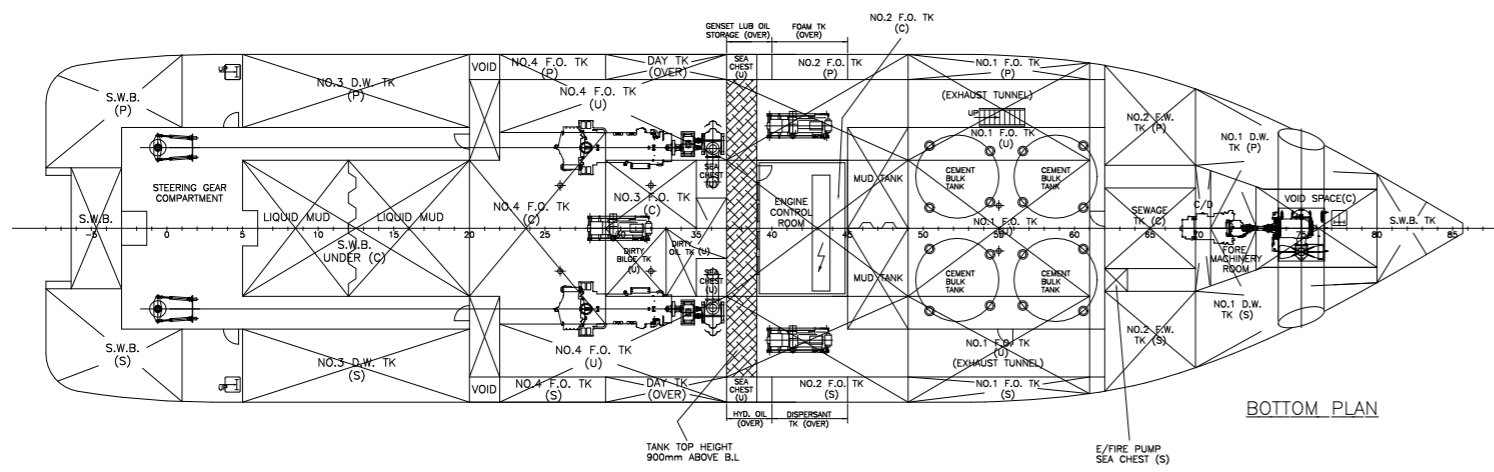
STERN VIEW



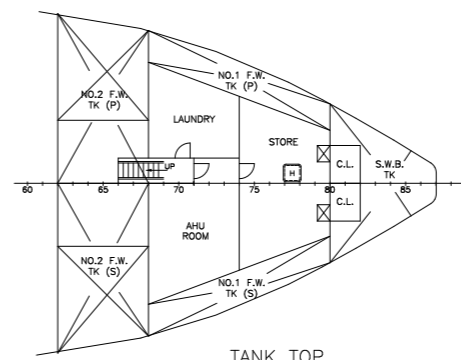
MAIN DECK PLAN



FORECASTLE DECK



BOTTOM PLAN



TANK TOP

PRINCIPAL PARTICULARS

LENGTH OA	58.00m
LENGTH WL	56.50m
BEAM MLD	13.80m
DEPTH MLD	5.50m
DRAFT DESIGNED/MAX	4.30m/4.75m
COMPLEMENT	20 MEN
F.O.	500.3m ³
F.W./D.W.	504.4m ³
S.W.B.	166m ³
FOAM	10m ³
DETERGENT	10m ³
DRY BULK	113m ³ (4000t ³)
LIQUID MUD	220m ³
CLEAR DECK SPACE	350m ²

SHIP NAME	SHARK-40	YARD No.	4958		
IMO No.	9528598	PORT OF REGISTRY	Kuwait		
CLASS	ABS +A1, @, offshore support vessel, Anchor handling towing vessel, Fire fighting vessel class 1 +AMS				
DELIVERY DATE	2009-4-11				
BUILDERS	CHEOY LEE SHIPYARDS LTD. 88-81 HING WAH STREET WEST LAI CHI KOK, K.L.H. H.K. TEL: (852) 2307 6333 FAX: (852) 2307 5977 HIN LEE (ZHUHAI) SHIPYARD CO. LTD. DOMEN, ZHUHAI, GUANGDONG, CHINA; POST CODE 519185 TEL: (86) 756 5015663 FAX: (86) 756 5015002				
SHIP:	58m A.H. TUG/SUPPLY VESSEL				
TITLE:	General Arrangement				
OWNER	CHEOY LEE SHIPYARD LTD YARD NO. 4958				
CLASS	ABS +A1(E)+AMS FIFI 1 TOWING AND ANCHOR HANDLING SERVICES				
CONAN WU & ASSOCIATES NAVAL ARCHITECTS SINGAPORE MEWAH BUILDING, LEVEL 3, 5 INTERNATIONAL BUSINESS PARK, SINGAPORE 609914 TEL: (65) 6562-1138 FAX: (65) 6562-0123 E-MAIL: mail@cw.com.sg CHINA JAO TONG BUILDING LEVEL-16, NO.831-2 TIBET ROAD(S), SHANGHAI 200011 TEL: (86) 21-63679881/63676046 FAX: (86) 21-63677332 E-MAIL: mail@cw.com.sg					
DRAWN	CHECKED	APPROVED	SCALE	DRAWING NO.	REV
LAO			1:300	C3960A/G-1	as fitted
APR-02-09					

THIS DRAWING AND THE INFORMATION CONTAINED HEREIN ARE SUPPLIED ON THE UNDERSTANDING THAT THEY ARE THE EXCLUSIVE PROPERTY OF CONAN WU & ASSOCIATES. THEY MUST NOT BE USED OR REPRODUCED IN WHOLE OR IN PART WITHOUT PERMISSION IN WRITING