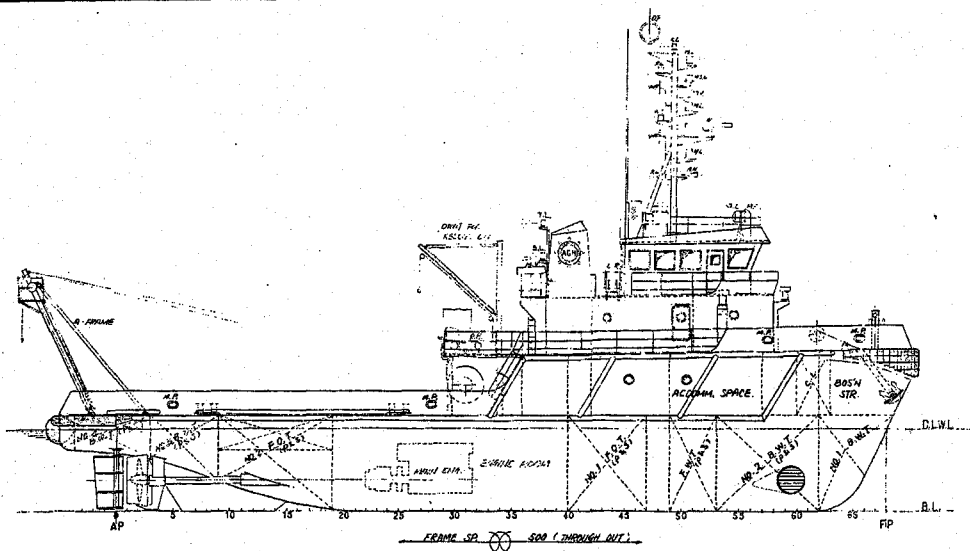
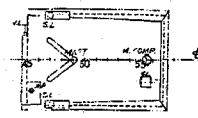


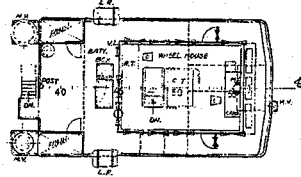
AAI



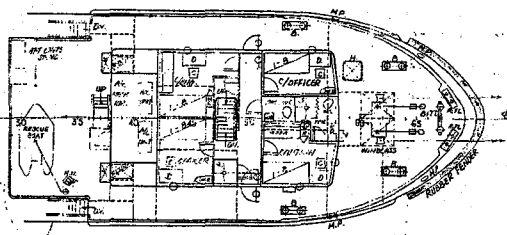
WHEEL HOUSE TOP



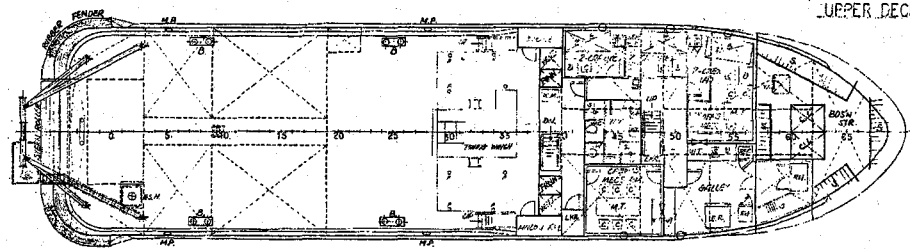
BRIDGE DECK



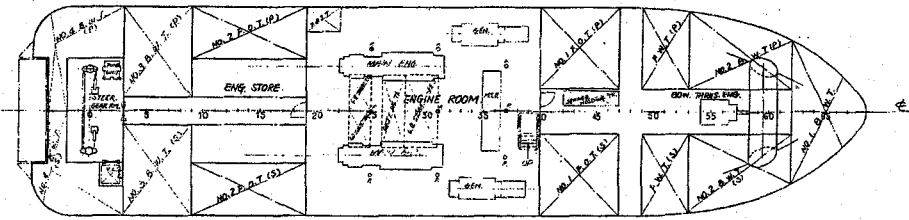
SOLE DECK



UPPER DECK



HOLD PLAN



PRINCIPAL PARTICULARS

LENGTH (O.A.)	ABT 37'50"
LENGTH (RET.P.P.)	34'00"
BREADTH (M.L.D.)	9'20"
DEPTH (M.L.D.)	4'20"
DRAFT (DESIGNED)	3'60"
MAIN ENGINE	DIESEL ENGINE 1000X2
SPEED (TRIAL)	ABT 12KTS
BOLLARD PULL (STATIC)	ABT 25TONS
COMPLEMENT	10P
CLASSIFICATION	ABS + A1 TOWING SERVICE & + AMS
	ANCHOR HANDLING VESSEL

FINISHED PLAN



L.A. AL FRACH  
LSB-163

S-187 2,000PS ANCHOR HANDLING TUG BOAT	
APPROVED BY	TITLE
ENGINEER BY	GENERAL ARRANGEMENT
DATE	SEP-22-83
SCALE	1/100
SHEET NO.	G-1001
Mitsui Ocean Development & Engineering Co., Ltd. TYOYO JAPAN	

NO.	BY	DATE	REVISIONS	NO.	BY	DATE	REVISIONS
1			PREPARED FOR FINISHED PLAN				

ENGINEER'S APPROVE	DATE	SECT.	PROJECT	RAVEL ARCH.	STRUCT.	MECH.	ELEC.	CIVIL ENG.	FIELD